

Search ORNL DAAC



[DAAC Home](#) > [Get Data](#) > [NASA Projects](#) > [MODIS/ASTER Airborne Simulator \(MASTER\)](#) > [User guide](#)

MASTER: Airborne Science, Oregon-Wyoming, August 2006

Get Data

Documentation Revision Date: 2023-07-06

Dataset Version: 1

Summary

This dataset includes Level 1B (L1B) data products from the MODIS/ASTER Airborne Simulator (MASTER) instrument. The spectral data were collected during two flights aboard a Cessna Caravan aircraft over Oregon and Wyoming, U.S., from 2006-08-01 to 2006-08-03. Data products include L1B georeferenced multispectral imagery of calibrated radiance in 50 bands covering wavelengths of 0.460 to 12.879 micrometers at approximately 10-meter spatial resolution. The L1B file format is HDF-4. In addition, the dataset includes flight paths, spectral band information, instrument configuration, ancillary notes, and summary information for each flight, and browse images derived from each L1B data file.

The MASTER instrument is a modified Daedalus Wildfire scanning spectrometer that flies on a variety of multi-altitude research aircraft and provides spectral information similar to that provided by the Moderate Resolution Imaging Spectroradiometer (MODIS) and the Advanced Spaceborne Thermal Emission and Reflection Radiometer (ASTER), which are aboard two NASA Earth Observing System satellites: Terra and Aqua. The primary goal of this airborne campaign was to demonstrate important science and applications research that is uniquely enabled by HypSIIRI-like data, taking advantage of the full suite of MASTER thermal infrared bands as well as the contiguous spectroscopic measurements of the AVIRIS (also flown in the HypSIIRI campaign), or combinations of measurements from both instruments.

This dataset includes a total of 34 data files: 11 files in Hierarchical Data Format (HDF-4; *.hdf) format, 8 text (*.txt) files, 2 archives of text files that are zipped (*.zip), 2 flight maps as GIF (*.gif) images, and 11 browse images in JPEG (*.jpg) format.

ASTER/MODIS Airborne Simulator Browse Imagery
Sky Aug 2006 Campaign – 3 Aug 2006
Tea Pot Dome NPR, WY
Flight #06-008-02 Track #3

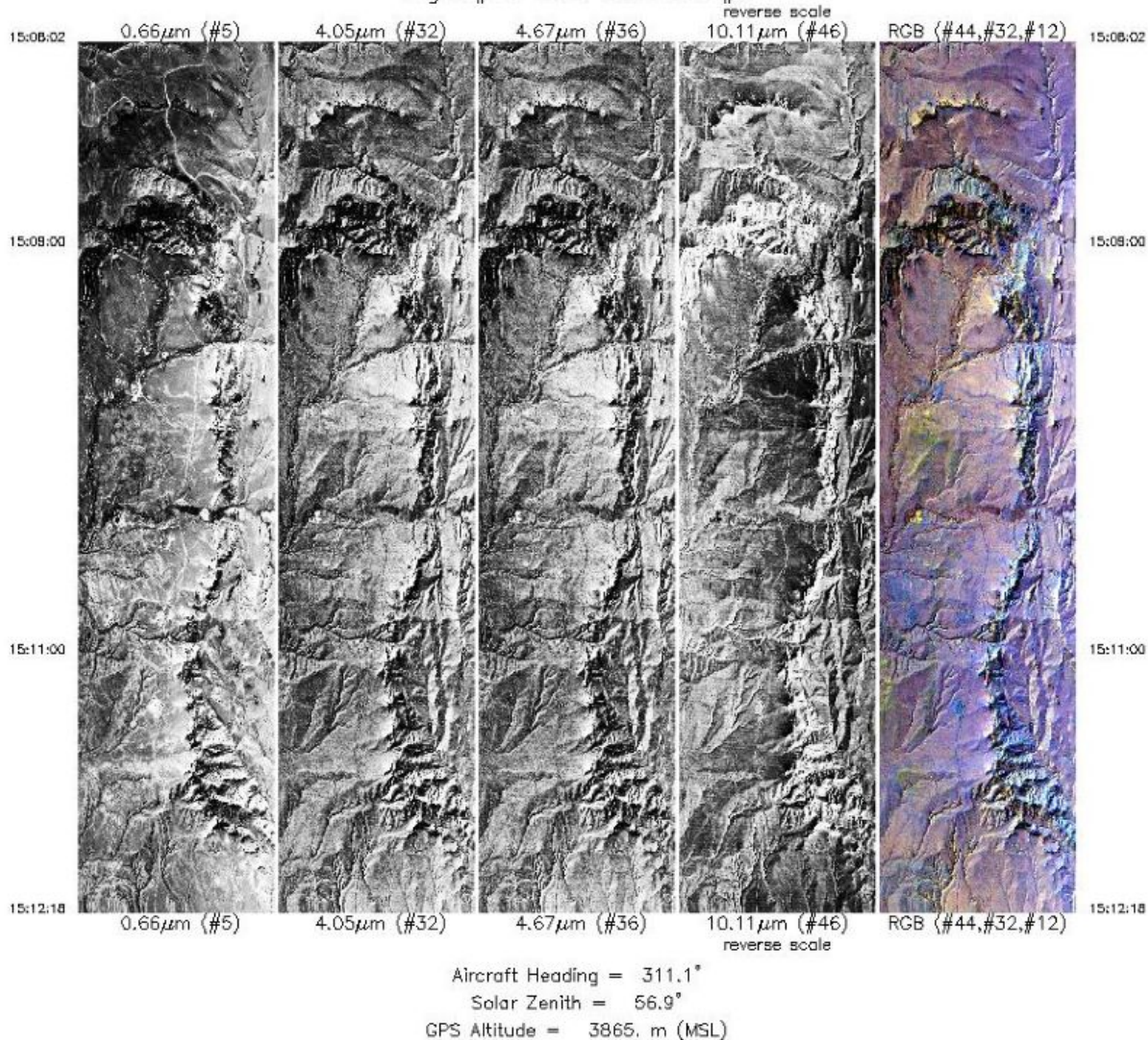


Figure 1. Single-band images and a RGB composite image from flight track 3 acquired on 03 August 2006 over Tea Pot Dome Naval Petroleum Reserve, 16 km north of Casper, Wyoming, U.S. Source: MASTERL1B_0600802_03_20060803_1508_1512_V01.jpg

Citation

Hook, S.J., J.S. Myers, K.J. Thome, M. Fitzgerald, A.B. Kahle, Airborne Sensor Facility NASA Ames Research Center, E.A. Silver, and W.L. Pickles. 2022. MASTER: Airborne Science, Oregon-Wyoming, August 2006. ORNL DAAC, Oak Ridge, Tennessee, USA. <https://doi.org/10.3334/ORNLDAAC/2026>

Table of Contents

1. Dataset Overview
2. Data Characteristics
3. Application and Derivation
4. Quality Assessment
5. Data Acquisition, Materials, and Methods
6. Data Access
7. References

1. Dataset Overview

This dataset includes Level 1B (L1B) data products from the MODIS/ASTER Airborne Simulator (MASTER) instrument. The spectral data were collected during two flights aboard a Cessna Caravan aircraft over Oregon and Wyoming, U.S., from 2006-08-01 to 2006-08-03. Data products include L1B georeferenced multispectral imagery of calibrated radiance in 50 bands covering wavelengths of 0.460 to 12.879 micrometers at approximately 10-meter spatial resolution. The L1B file format is HDF-4. In addition, the dataset includes flight paths, spectral band information, instrument configuration, ancillary notes, and summary information for each flight, and browse images derived from each L1B data file.

The MASTER instrument is a modified Daedalus Wildfire scanning spectrometer that flies on a variety of multi-altitude research aircraft and provides spectral information similar to that provided by the Moderate Resolution Imaging Spectroradiometer (MODIS) and the Advanced Spaceborne Thermal Emission and Reflection Radiometer (ASTER), which are aboard two NASA Earth Observing System satellites: Terra and Aqua. The primary goal of this airborne campaign was to demonstrate important science and applications research that is uniquely enabled by HypSIIRI-like data, taking advantage of the full suite of MASTER thermal infrared bands as well as the contiguous spectroscopic measurements of the AVIRIS (also flown in the HypSIIRI campaign),

or combinations of measurements from both instruments.

Project: [MODIS/ASTER Airborne Simulator](#)

The MODIS/ASTER Airborne Simulator (MASTER) is a scanning spectrometer which flies on a variety of multi-altitude research aircraft and provides data similar to the Moderate Resolution Imaging Spectroradiometer (MODIS) and the Advanced Spaceborne Thermal Emission and Reflection Radiometer (ASTER). MASTER first flew in 1998 and has ongoing deployments as a Facility Instrument in the NASA Airborne Science Program (ASP). MASTER is a joint project involving the Airborne Sensor Facility (ASF) at the Ames Research Center, the Jet Propulsion Laboratory (JPL), and the Earth Resources Observation and Science Center (EROS).

Related Publication

Hook, S.J. Myers, J.J., Thome, K.J., Fitzgerald, M. and A.B. Kahle. 2001. The MODIS/ASTER airborne simulator (MASTER) - a new instrument for earth science studies. Remote Sensing of Environment 76:93–102. [https://doi.org/10.1016/S0034-4257\(00\)00195-4](https://doi.org/10.1016/S0034-4257(00)00195-4)

Related Datasets

Additional MASTER datasets are available on the ORNL DAAC [MASTER](#) project page.

Acknowledgments

The MASTER instrument is maintained and operated by the Airborne Sensor Facility (ASF) at NASA Ames Research Center in Mountain View, California, under the oversight of the EOS Project Science Office at NASA Goddard. Data processing was conducted at NASA Ames Research Center and the Jet Propulsion Laboratory at the California Institute of Technology in Pasadena, California.

2. Data Characteristics

Spatial Coverage: Portions of Oregon and Wyoming, U.S.

Spatial Resolution: 7 to 10 m

Temporal Coverage: 2006-08-01 to 2006-08-03

Temporal Resolution: One-time estimate

Study Area: All latitudes and longitudes given in decimal degrees.

| Sites | Westernmost Longitude | Easternmost Longitude | Northernmost Latitude | Southernmost Latitude |
|---------------|-----------------------|-----------------------|-----------------------|-----------------------|
| Oregon, U.S. | -122.089 | -121.806 | 42.528 | 42.331 |
| Wyoming, U.S. | -106.229 | -106.143 | 43.379 | 43.206 |

Data File Information

This dataset includes a total of 34 data files: 11 files in Hierarchical Data Format (HDF-4; *.hdf) format, 8 text (*.txt) files, 2 archives of text files that are zipped (*.zip), 2 flight maps as GIF (*.gif) images, and 11 browse images in JPEG (*.jpg) format.

There are different numbers of each type of file, which corresponds to the number of "flights" and "flight tracks. A "flight" is flown on a single day, and a "flight track" typically refers to a segment of a given flight. The number of flight tracks varies among flights (Table 2).

- There are two flights, including 11 flight tracks (Table 2).
- For each of 11 flight tracks, there is one L1B data file in HDF format and one auxiliary browse image (*.jpg).
- For each flight, there is a collection of auxiliary files providing information about the flight and instrument configuration.

The primary data files are named MASTERLAA_BBBBBBBB_CC_YYYYMMDD_EEFF_GGHH_V0J-X.ext (e.g., MASTERL1B_0600801_01_20060801_1903_1912_V01.hdf).

The flight track-level browse images are named MASTERLAA_BBBBBBBB_CC_YYYYMMDD_EEFF_GGHH_V0J.jpg (e.g., MASTERL1B_0600801_01_20060801_1903_1912_V01.jpg).

The deployment-level auxiliary files are named MASTER_BBBBBBBB_YYYYMMDD_X.ext (e.g., MASTER_0600801_20060801_config.txt).

- AA = "1B" , indicating L1B data level,
- BBBBBBBB = flight number (Table 2),
- CC = flight track (Table 2),
- YYYYMMDD = date of sampling,
- EEFF = starting time at EE hour and FF minute,
- GGHH = ending time at GG hour and HH minute,
- J = version number for file,
- X = the file content (see Table 1), and
- ext = "hdf", "gif", "jpg", "txt", or "zip", indicating the file extension.

Table 1. File names and descriptions.

| File Name | Level | File Type | Total Files | Description |
|--|-------|-----------|-------------|---|
| Primary Data Files | | | | |
| MASTERL1B_BBBBBBBB_CC_YYYYmmDD_EEFF_GGHH_V0J.hdf | L1B | HDF-4 | 11 | Multispectral radiance in 50 bands, pixel coordinates, sensor configuration, aircraft platform data, analysis parameters. The "CalibratedData" variable provides estimates of radiance in units of W m ⁻² sr ⁻¹ per micron. |

| File Name | Level | File Type | Total Files | Description |
|--|-------|-----------|-------------|--|
| Auxiliary files | | | | |
| MASTERLAA_BBBBBBBB_CC_YYYYMMDD_EEFF_GGHH_V0J.jpg | L1B | JPEG | 11 | Browse figures; one per flight track, multiple tracks per flight. |
| MASTER_BBBBBBBB_YYYYMMDD_ancillary.txt | - | Text | 2 | Ancillary information about flight including notes on aircraft platform, mission objective, and data evaluation. |
| MASTER_BBBBBBBB_YYYYMMDD_config.txt | - | Text | 2 | Instrument configuration information for flight. |
| MASTER_BBBBBBBB_YYYYMMDD_flightpath.gif | - | GIF | 2 | Map showing flight paths. |
| MASTER_BBBBBBBB_YYYYMMDD_spectral_band_info.txt | - | Text | 2 | Spectral band information. |
| MASTER_BBBBBBBB_YYYYMMDD_spectral_response_table.zip | - | Text | 2 | Spectral response tables by band (ZIP archive of 50 text files). |
| MASTER_BBBBBBBB_YYYYMMDD_summary.txt | - | Text | 2 | Time and coordinates for start and end of flight tracks along with the number of scan lines, solar and instrument angles, aircraft altitude, and additional information. FTLT = flight track number. |

Data File Details

The HDF-4 files contain swath trajectory data using longitude, latitude coordinates. The spatial resolution ranges from 7 m to 10 m and is a function of aircraft altitude.

Table 2. Number of flight tracks for each MASTER flight during this 2006 deployment over Oregon (OR) and Wyoming (WY).

| Date | Flight.Number | Locations (USA) | Flight Tracks |
|------------|---------------|--|---------------|
| 2006-08-01 | 0600801 | Klamath Lake, OR | 2 |
| 2006-08-03 | 0600802 | Tea Pot Dome Naval Petroleum Reserve, WY | 9 |
| Total | | | 11 |

3. Application and Derivation

The primary objective of MASTER is to: (a) collect ASTER-like and MODIS-like land datasets to support the validation of the ASTER and MODIS geophysical retrieval algorithms; (b) collect these datasets at a higher resolution than the spaceborne datasets to permit scaling studies and comparisons with in-situ measurements; and (c) under fly the EOS-AM1 ASTER and MODIS sensors to provide an additional radiometric calibration to assist with in-flight instrument performance characterization. Calibration is particularly important for ASTER where on-board calibration is dependent on a single black body in the TIR and only partial aperture illumination in the VNIR.

A secondary objective of MASTER is to: (a) provide both a backup instrument and backup modules for the current MODIS Airborne simulator, which is committed to a program of atmospheric and oceanic measurements; and (b) provide a wider spectral and dynamic range alternative to the use of the Thematic Mapper (TM) airborne simulator and Thermal Infrared Multispectral Scanner (TIMS) airborne scanners (JPL, 2021b).

MASTER imagery has been used for mapping wildfires and their impacts (Veraverbeke et al., 2011), land covers (Li and Moon, 2004), coral reefs (Capolsini et al., 2003), and urban heat islands (Zhao and Wentz, 2016).

4. Quality Assessment

The MASTER instrument channels are calibrated spectrally and radiometrically in the laboratory preflight and postflight. The mid-infrared and thermal infrared channels (26–50) are also radiometrically calibrated in-flight by viewing an internal hot and cold blackbody with each scanline (Hook et al., 2001). Three calibration and validation experiments were conducted in 1998–2001 (Hook et al., 2001; JPL, 2021a). Spectral response information for this deployment is included in the MASTER_BBBBBBBB_YYYYMMDD_spectral_response_table.zip files.

5. Data Acquisition, Materials, and Methods

The MASTER instrument was developed by the NASA Ames Research Center in conjunction with the Jet Propulsion Laboratory. The instrument consists of three key components: the scanning spectrometer, the digitizer, and the storage system. The scanning unit was built by Sensys Technology (formerly Daedalus Enterprises) and the digitizer was a collaborative effort between Berkeley Camera Engineering and the Ames Airborne Sensor Facility (ASF). The data storage system and overall system integration were also provided by the ASF.

The MASTER instrument is similar to the MODIS Airborne Simulator (MAS) developed by the MODIS project (King et al., 1996). However, it has two key differences. First, MASTER supports a variety of scan speeds allowing it to acquire contiguous imagery from a variety of altitudes with different pixel sizes. Second, the channel positions are configured to closely match those of ASTER and MODIS. A detailed description of the instrument and optical system are provided by Hook et al. (2001) and King et al. (1996), respectively.

For this deployment, the MASTER instrument was flown on Cessna Caravan (Sky Research) aircraft at altitude of approximately 3250 m above sea level.

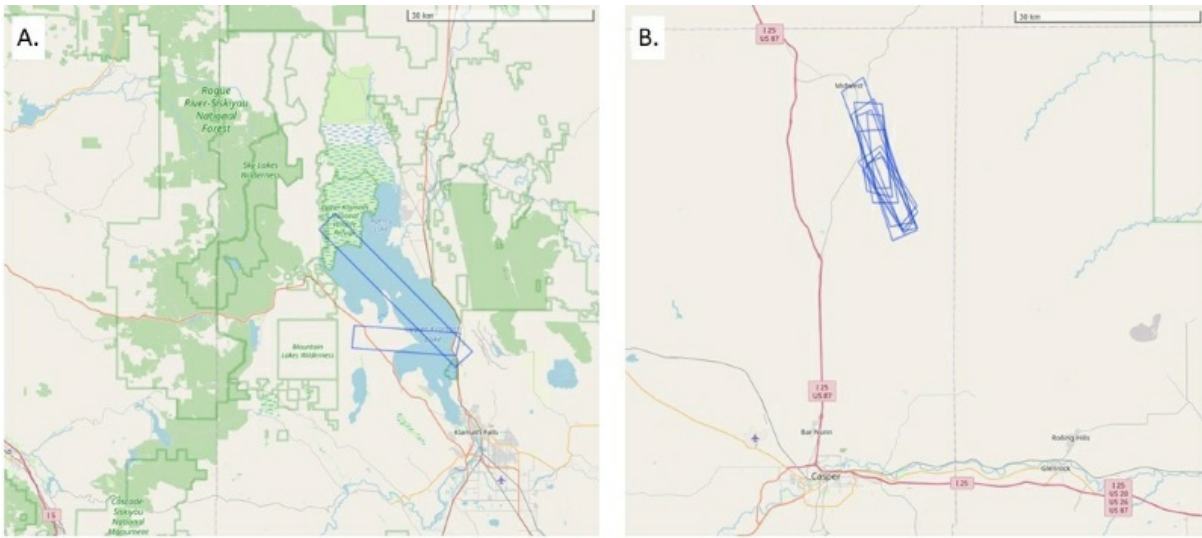


Figure 2. Flight tracks over Klamath Lake, Oregon (A) and Tea Pot Dome Naval Petroleum Reserve near Casper, Wyoming (B) represented as blue rectangular polygons. Basemap: © OpenStreetMap contributors.

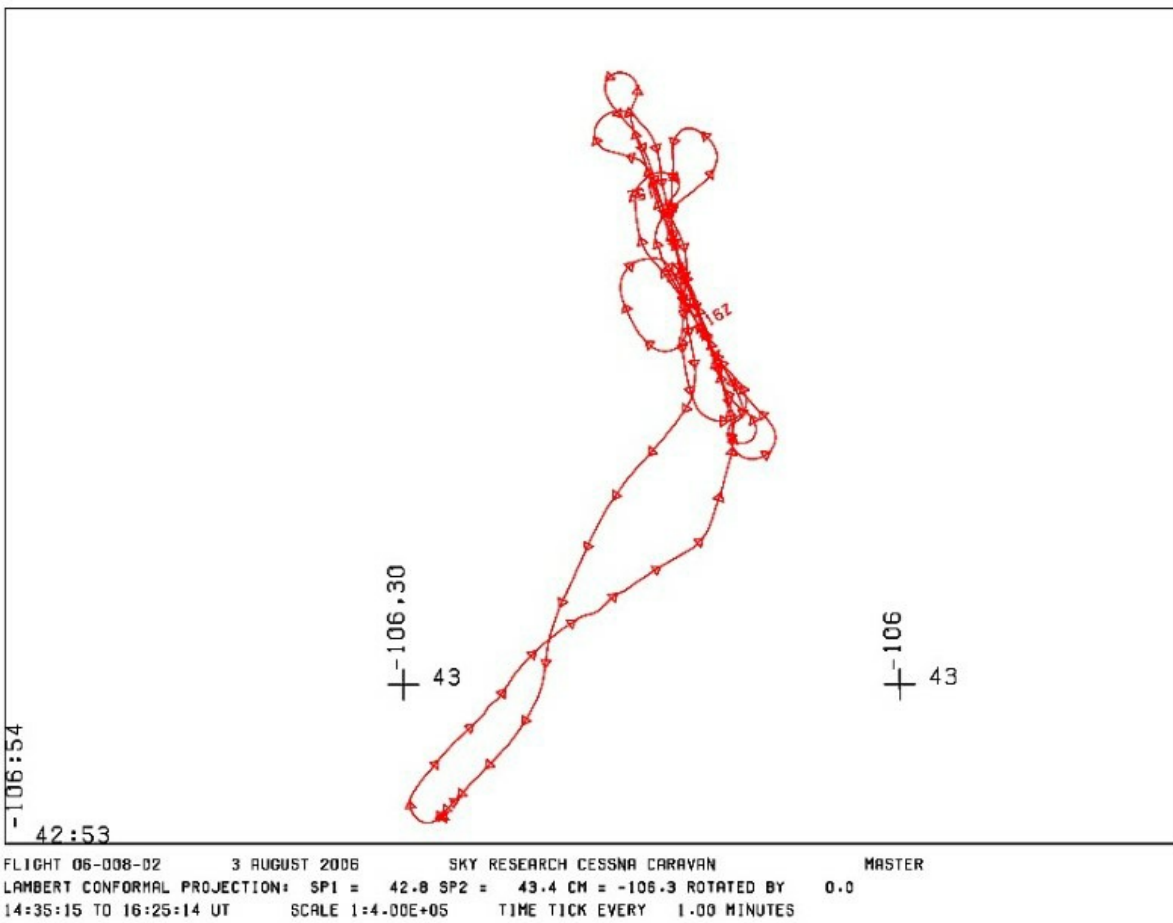


Figure 3. . Flight path is shown for 03 August 2006. Flight 0600802 and 9 flight tracks over Wyoming. Source: MASTER_0600802_20060803_flightpath.gif

6. Data Access

These data are available through the Oak Ridge National Laboratory (ORNL) Distributed Active Archive Center (DAAC).

MASTER: Airborne Science, Oregon-Wyoming, August 2006

Contact for Data Center Access Information:

- E-mail: uso@daac.ornl.gov
- Telephone: +1 (865) 241-3952

7. References

Capolsini, P., S. Andréfouët, C. Rion, and C. Payri. 2003. A comparison of Landsat ETM+, SPOT HRV, Ikonos, ASTER, and airborne MASTER data for coral reef habitat mapping in South Pacific islands. *Canadian J. Remote Sensing* 29:187-200. <https://doi.org/10.5589/m02-088>

Coll, C., V. Caselles, E. Rubio, F. Sospedra, and E. Valor. 2001. Temperature and emissivity separation from calibrated data of the Digital Airborne Imaging Spectrometer. Remote Sensing of Environment 76:250-259. [https://doi.org/10.1016/S0034-4257\(00\)00207-8](https://doi.org/10.1016/S0034-4257(00)00207-8)

Hook, S.J. Myers, J.J., Thome, K.J., Fitzgerald, M., and A.B. Kahle. 2001. The MODIS/ASTER airborne simulator (MASTER) - a new instrument for earth science studies. Remote Sensing of Environment 76:93-102. [https://doi.org/10.1016/S0034-4257\(00\)00195-4](https://doi.org/10.1016/S0034-4257(00)00195-4)

JPL. 2021a. Calibration and Validation, MASTER: MODIS/ASTER Airborne Simulator. Jet Propulsion Laboratory, California Institute of Technology, Pasadena, California, USA. <https://masterprojects.jpl.nasa.gov/cal-val>

JPL. 2021b. Science objectives, MASTER: MODIS/ASTER Airborne Simulator. Jet Propulsion Laboratory, California Institute of Technology, Pasadena, California, USA. <https://masterprojects.jpl.nasa.gov/objectives>

King, M.D., W.P. Menzel, P.S. Grant, J.S. Myers, G.T. Arnold, S.E. Platnick, L.E. Gumley, S.C. Tsay, C.C. Moeller, M. Fitzgerald, K.S. Brown, and F.G. Osterwisch. 1996. Airborne scanning spectrometer for remote sensing of cloud, aerosol, water vapor and surface properties. J. Atmospheric and Oceanic Technology 13:777-794. [https://doi.org/10.1175/1520-0426\(1996\)013<0777:ASSFRS>2.0.CO;2](https://doi.org/10.1175/1520-0426(1996)013<0777:ASSFRS>2.0.CO;2)

Li, P., and W.M. Moon. 2004. Land cover classification using MODIS-ASTER airborne simulator (MASTER) data and NDVI: A case study of the Kochang area, Korea. Canadian J. Remote Sensing 30:123-126. <https://doi.org/10.5589/m03-061>

Veraverbeke, S., S. Harris, and S. Hook. 2011. Evaluating spectral indices for burned area discrimination using MODIS/ASTER (MASTER) airborne simulator data. Remote Sensing of Environment 115:2702-2709. <https://doi.org/10.1016/j.rse.2011.06.010>

Zhao, Q., and E.A. Wentz. 2016. A MODIS/ASTER Airborne Simulator (MASTER) imagery for urban heat island research. Data 1:7. <https://doi.org/10.3390/data1010007>



[Privacy Policy](#) | [Feedback](#) | [Help](#)



🏠 Home

About Us

- [Mission](#)
- [Data Use and Citation Policy](#)
- [User Working Group](#)
- [Partners](#)

Get Data

- [Science Themes](#)
- [NASA Projects](#)
- [All Datasets](#)

Submit Data

- [Submit Data Form](#)
- [Data Scope and Acceptance](#)
- [Data Authorship Policy](#)
- [Data Publication Timeline](#)
- [Detailed Submission Guidelines](#)

Tools

- [MODIS](#)
- [THREDDS](#)
- [SDAT](#)
- [Daymet](#)
- [Airborne Data Visualizer](#)
- [Soil Moisture Visualizer](#)
- [Land - Water Checker](#)

Resources

- [Learning](#)
- [Data Management](#)
- [News](#)
- [Earthdata Forum](#) [↗](#)

🗨️ Contact Us